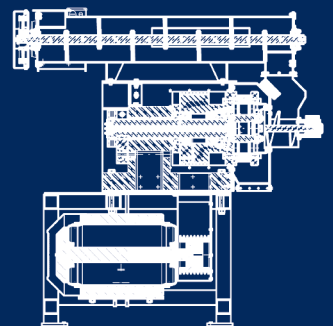
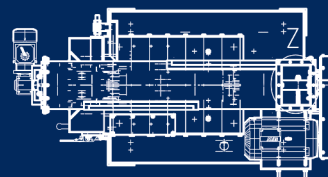
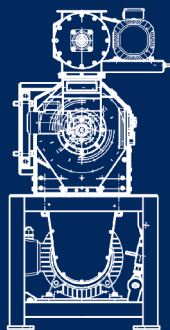
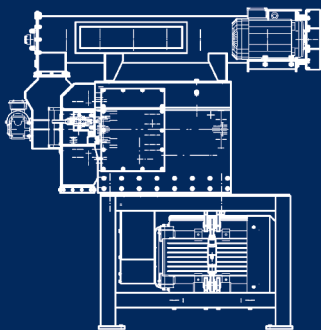
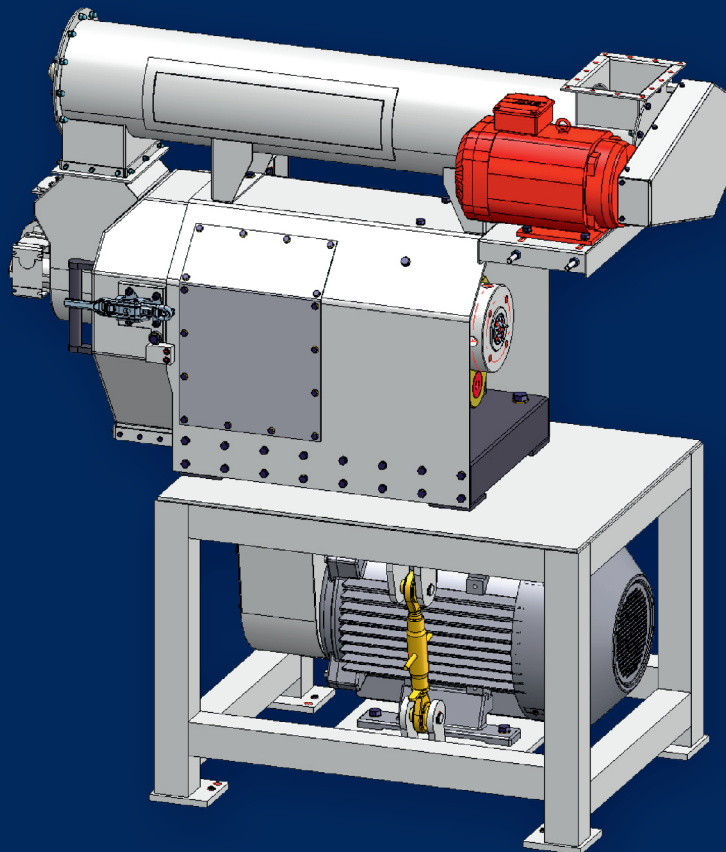
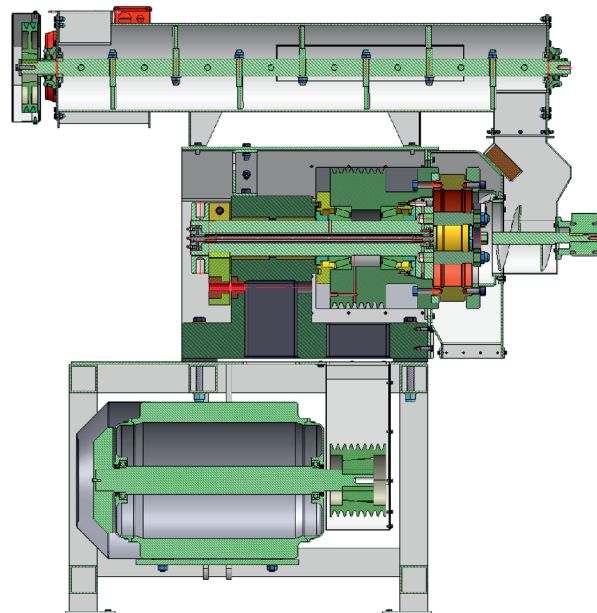
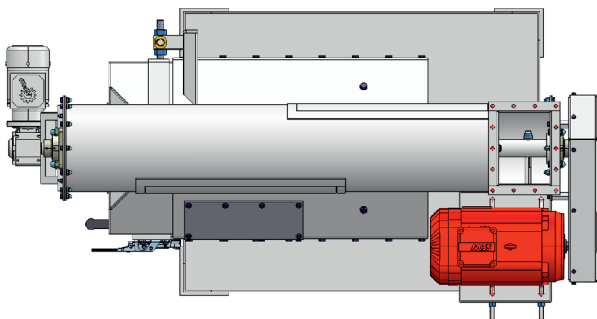
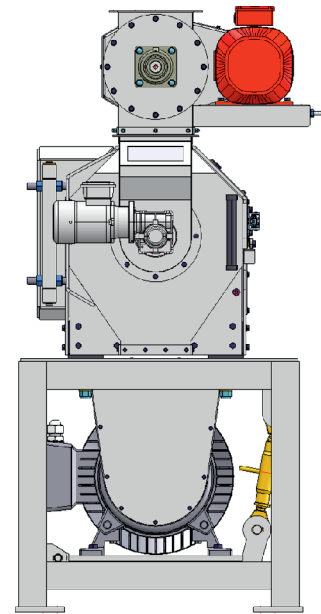
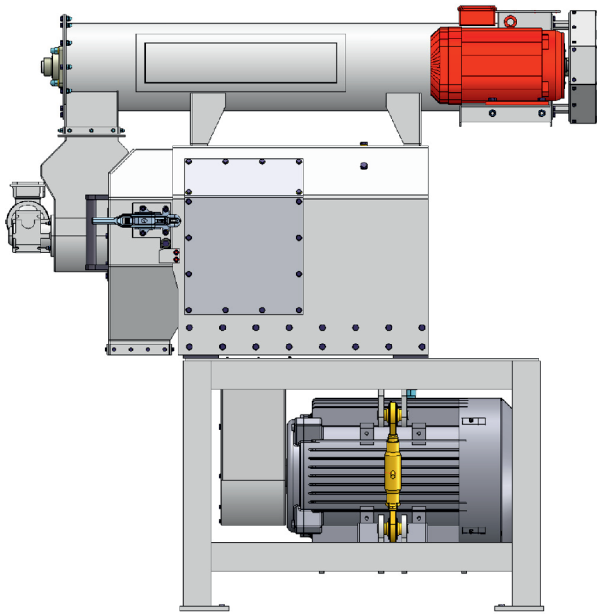
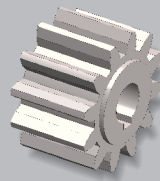


Pellet Mill MP270



For the palletisation of biomass up to
a maximum input moisture content of 15%



Pellet Mill MP270

- V-belt drive 8-grooves
- supported low-profile motor base with twin-tension system
- forged main shaft made of high-strength tempering steel
- housing made of steel-welding construction
- solid-block machine base made of cast iron
- 1-piece all-steel rotor with integrated belt profile
- rollers individually adjustable
- 2-roller system
- rollerexchange by plug-in system
- variable matrix widths
- conical matrix receiver for tight fit
- symmetrical matrix geometry for mounting on the other side
- screwed reinforcement ring
- securing by bolts at mechanicoverload
- rotation speed monitoring
- press door in stainless steel
- press door adjustable
- magnet in the press input
- safety switch with locking function for press door
- force-feeding with own drive

Technical specifications

Working width	50mm
Output in wood	0,15-0,3 t/h
Working speed	3,8-4,8 m/s
Power consumption	22kW
Dimensions	810x1040x1716mm
Weight	ca. 2000kg