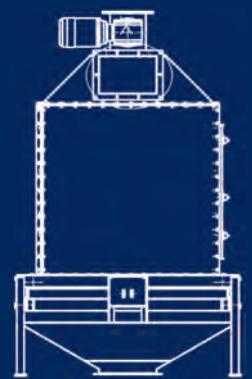
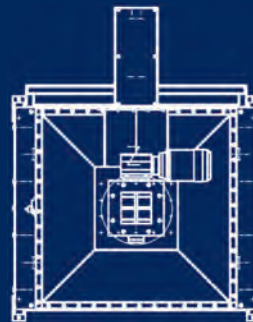
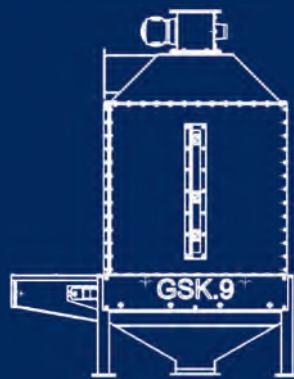
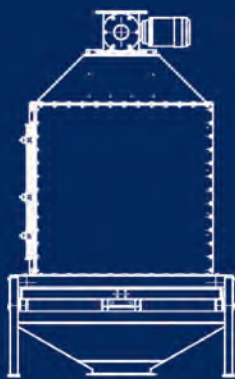
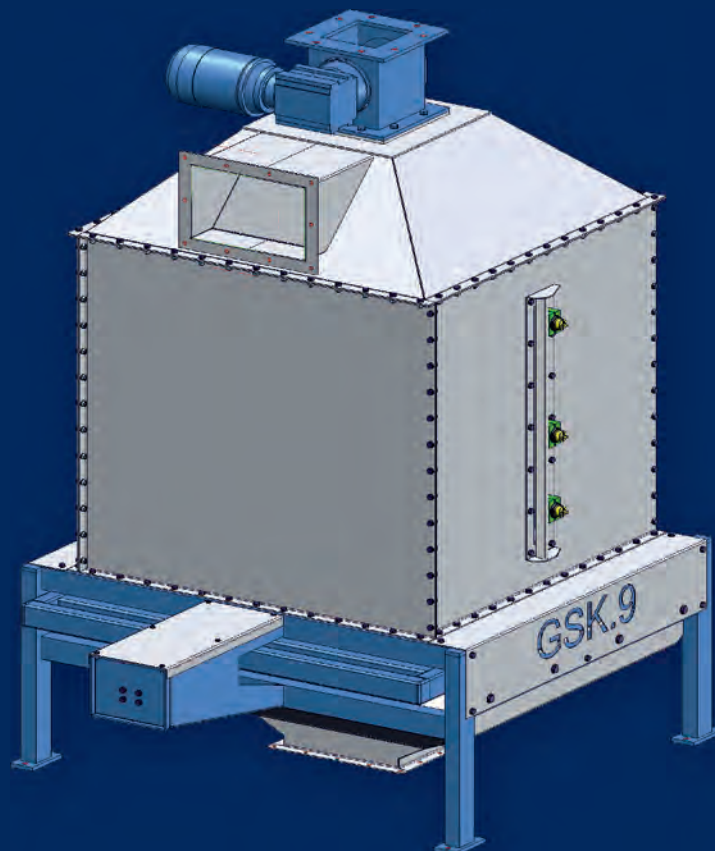
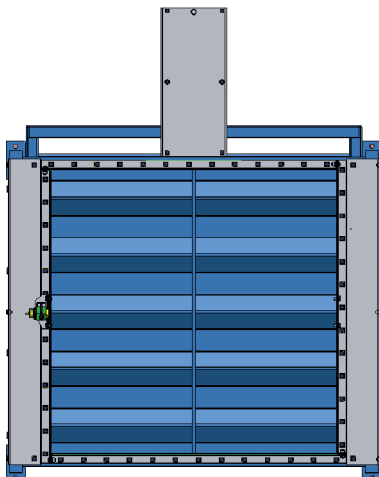
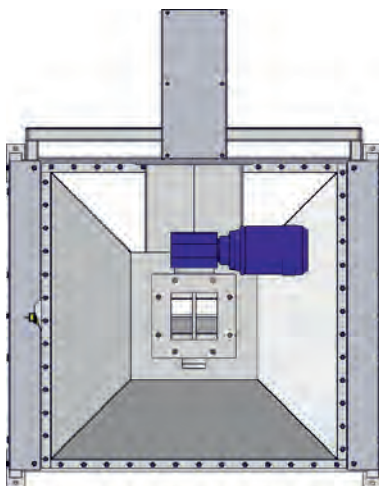
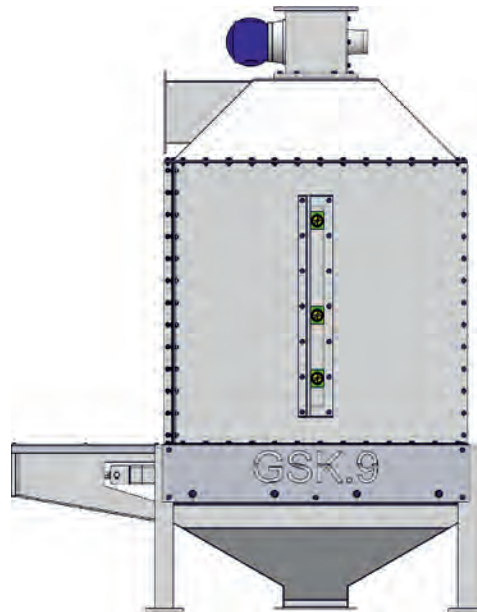
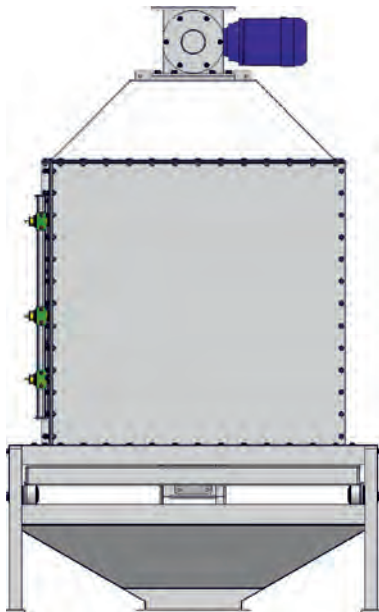
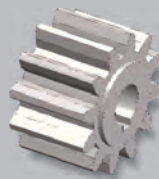


Counterflow Cooler GSK.9



For cooling pellets in counterflow up to a maximum input temperature of approx. 90°C.
Cooling capacity: 200 - 1000 kg



Counterflow Cooler GSK.9

General description of the counterflow cooler

- cooler assembly made of 3 mm thick sheet-metal-welded construction
- base frame made of professional pipe in solid steel-welding construction
- pneumatic discharge system in saddle construction to avoid product-specific bridging, good airflow and complete emptying
- transparent maintenance opening for easy access to the cooling room
- 3 pcs adjustable level sensors: Min, Max and overfill protection
- rotary impeller in stainless steel with coupled geared motor 0.55 kW
- adjustable air regulation flap with manual adjustment (standard)
- automatic adjustment available as an option
- exhaust connection with rectangular cross-section on the side of the cooler's roof

Technical specifications

Cooling capacity	ca. 500-1000 kg/h
Dimensions	900x900x1917mm
Rotary impeller	0,55kW
Discharge system	pneumatic