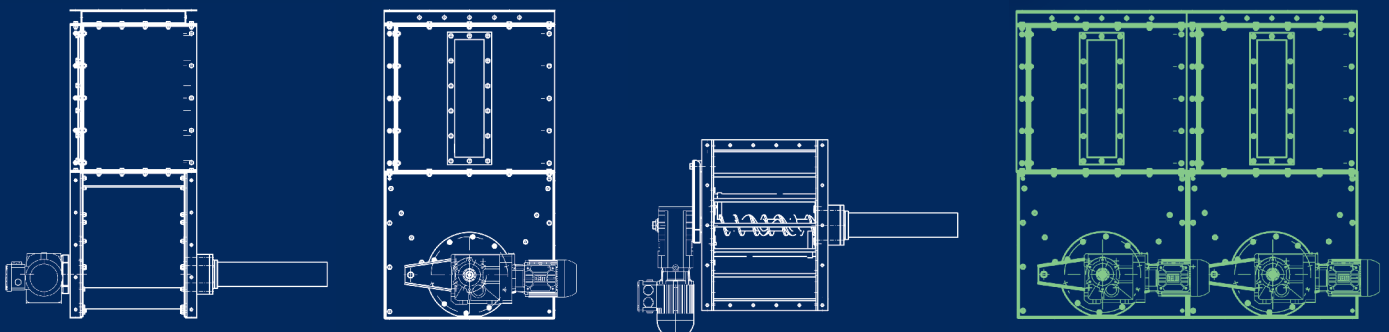
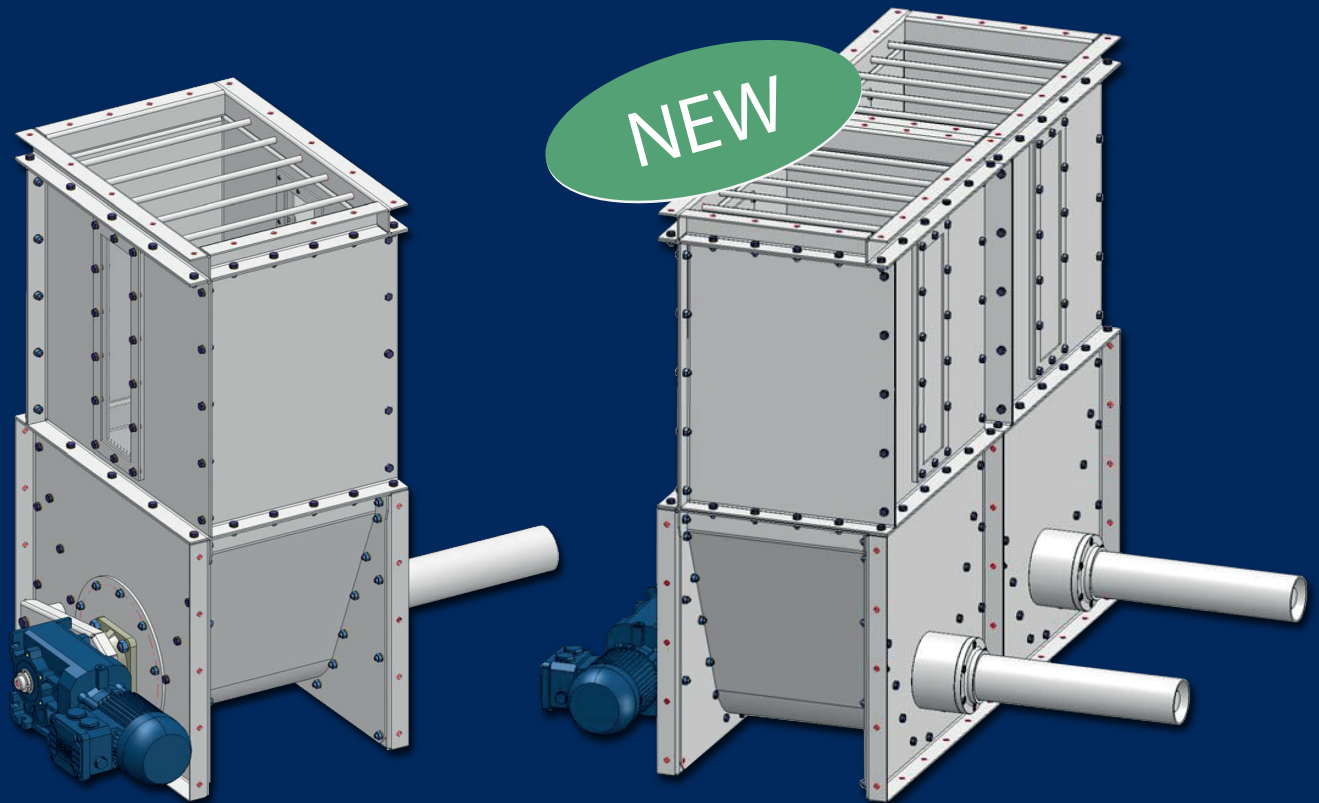
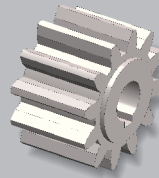


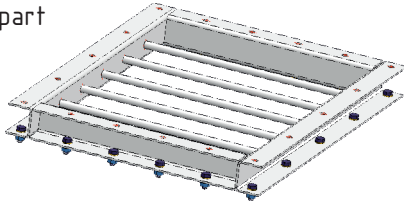
Additive Doser for aggregates AD.50



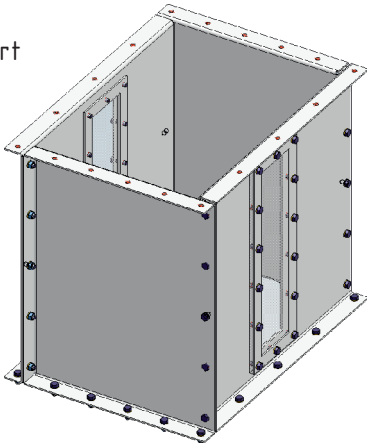
For adding binders for wood
and biomass pelletizing



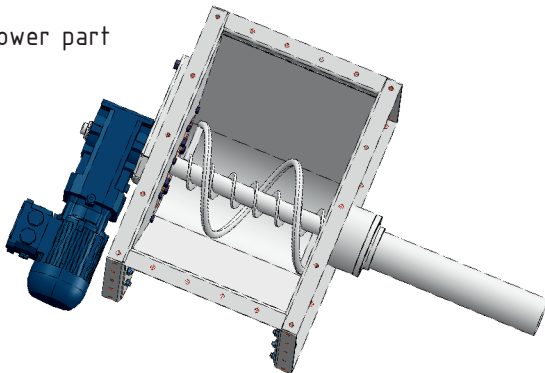
Upper part



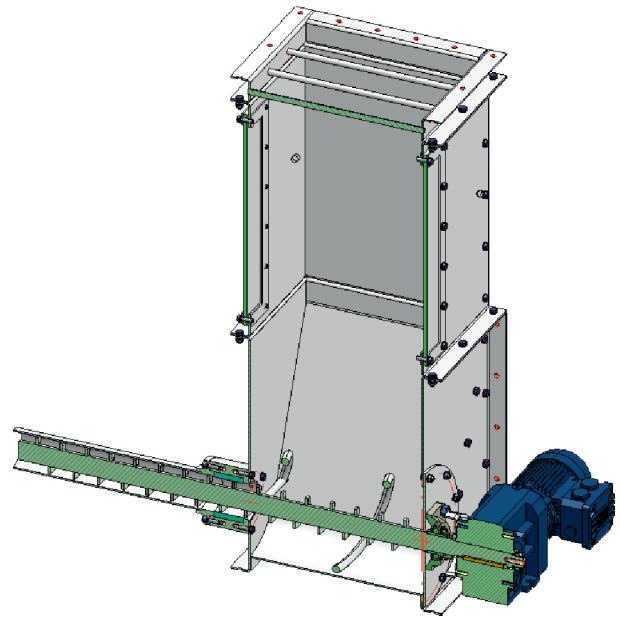
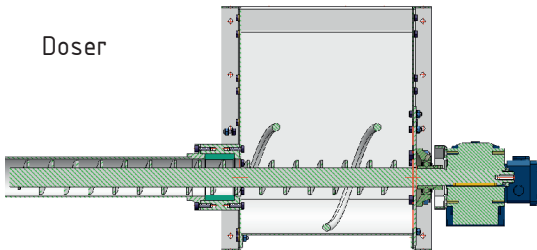
Middle part



lower part



Doser



Additive Doser for aggregates AD.50*

Lower part – the lower part of the dosing device is the actual dosing device with an integrated mixing device of the following design:

- Stable dosing screw with mixer paddle to avoid bridging;
- Detachable front panel with drive unit for maintenance and service purposes;
- Detachable pipe connection for cleaning and service.

Middle part – the middle part serves as raw material template for dosing goods with a gross volume of approximately 85 liters. The total volume of the dosing unit is approx. 100 liters, including two-sided service windows for visual inspection.

Upper part – Filling and protection for manual filling.

Sacks can be deposited on this grid, opened and emptied directly into the bunker.

The grid size of the filling grid is dimensioned in such a way, that an intervention into the dosing unit is made impossible.

Control – the dosing unit is supplied without control and frequency converter.

The control is to be integrated into the process control.

The dosing of aggregates is volumetrically analogous to the mass flow of the dosing screw of the pressing operation.

EXECUTED COMPLETELY IN STAINLESS STEEL!

Note: The manufacturer reserves the right to make technical improvements and modifications that improve the functionality and performance of the system as well as the current technology, provided that these modifications do not adversely affect the customer.

Technical specifications

Power consumption	0,12 kW
Rotation speed	5/min
Voltage	230/240 V
Frequency	50 Hz
Output	0...50 kg/h